

MONTHLY MEMBERSHIP PROGRESS REPORT

LOCATION MISSOURI

District 26 M1

Results as of: 5/31/2021

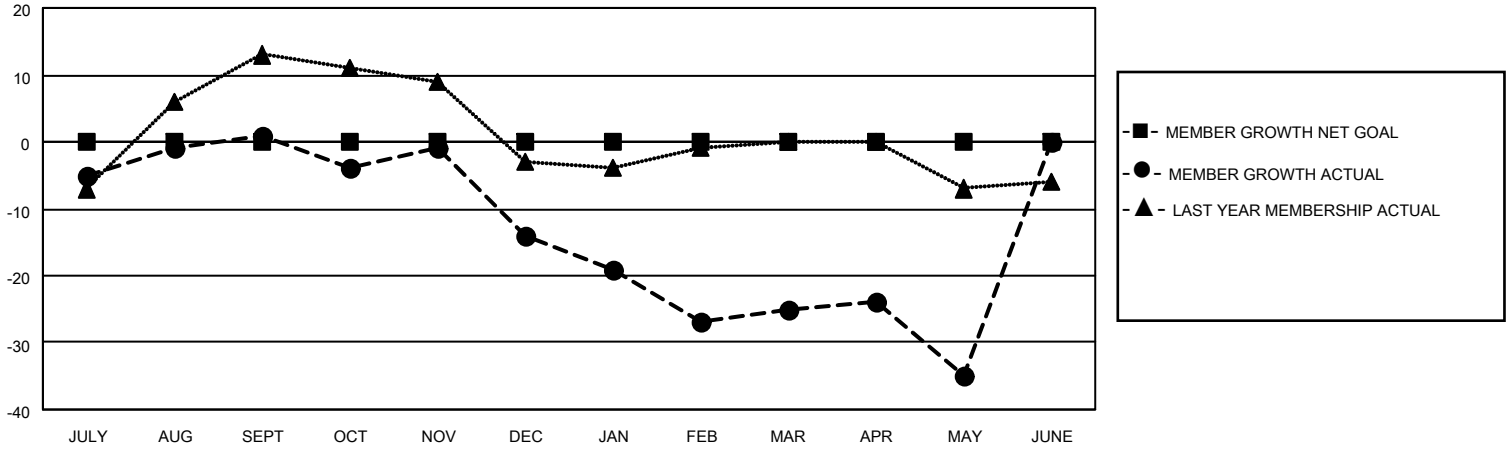
Clubs			
RESULTS FOR 2020-2021			
QUARTER	NEW CLUB GOAL	NEW CLUBS	DROPPED CLUBS
JULY/AUG/SEPT	0	0	0
OCT/NOV/DEC	0	0	0
JAN/FEB/MAR	0	0	2
APR/MAY/JUNE	0	0	0

Members			
RESULTS FOR 2020-2021			
QUARTER	MEMBER GROWTH NET GOAL	MEMBER GROWTH ACTUAL	DROPPED MEMBERS ACTUAL (including transfers)
JULY/AUG/SEPT	0	13	12
OCT/NOV/DEC	0	8	22
JAN/FEB/MAR	0	23	30
APR/MAY/JUNE	0	24	28

GOALS AND ACTUAL NEW CLUBS CUMULATIVE



GOALS AND ACTUAL MEMBERS CUMULATIVE



DROPPED CLUBS: 2	17 CLUBS OF 39 ADDED 1 OR MORE NEW MEMBERS	<u>GENDER DISTRIBUTION</u>
<u>DROPPED MEMBERS</u>		MALE 785 (75.85%)
DECEASED 17		FEMALE 250 (24.15%)
CLUB CANCELLED 6	CLICK HERE FOR CUMULATIVE MEMBERSHIP DATA	TOTAL FAMILY UNIT MEMBERS 126
OTHER 69		FAMILY MEMBERS PAYING HALF DUES 63
TOTAL 92		